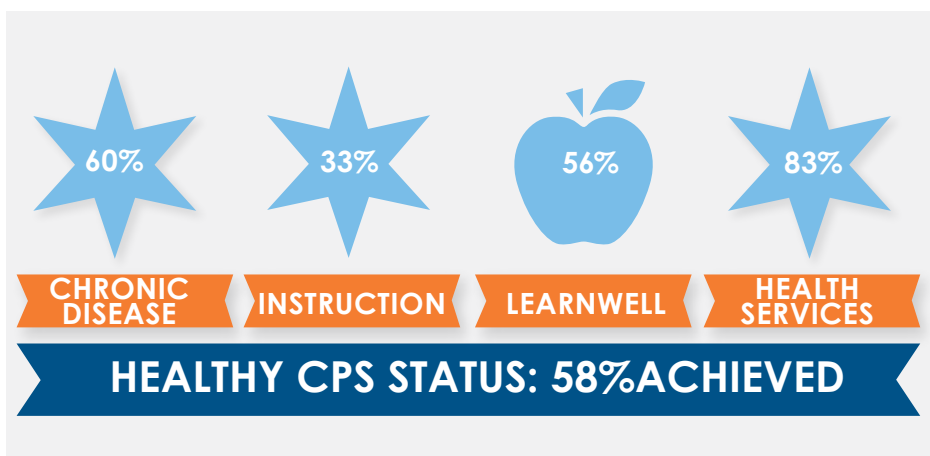


SCHOOL YEAR 2018-2019

Healthy CPS Alignment Report

KENNEDY HS
Principal: George Z Szkapiak



The Healthy CPS Status pictured on the left is based on data from the Healthy CPS Survey, Learning Hub and IMPACT. The Healthy CPS status will be reflected on the SY1819 School Progress Report.

Healthy CPS demonstrates a school's commitment to a safe and healthy learning environment by offering access to daily physical activity, nutritious foods, school-based health services, health education and supports for students with chronic conditions. Schools that align to 90% or more of the criteria are considered Healthy CPS.

The Healthy CPS Indicator is the first ever comprehensive health-focused measure that is included on the CPS school progress report. It was created to help schools streamline health and wellness initiatives already taking place at the school. Learn more at cps.edu/HealthyCPS.



CHRONIC DISEASE

60%

GENERAL

- The Student Medical Information form is distributed to all students and parents at the beginning of each school year
- With the proper documentation, students with chronic conditions are allowed to carry and self-administer their own medication, such as epinephrine or inhalers

STAFF TRAINING

- My school had a non-nurse staff member trained annually as a Delegated Care Aide (DCA) to assist students with daily diabetes management
- All school personnel know the unlocked location of the district-issued EpiPens® at the school
- All school staff completed the chronic conditions training webinar in school year 18-19

SYMBOLS

- Achieved
- Not Achieved
- N/A Not Applicable
- ? No Data (i.e. did not complete Healthy CPS Survey)



INSTRUCTION

33%

SEXUAL HEALTH EDUCATION

- A minimum of two school staff members have completed the CPS Sexual Health Education Instructor Training within the last four years
- All of the required sexual health education minutes were taught in all grade levels at my school (300 min in grades K-4, 675 min in grades 5-12)
- My school sent parents/guardians at least one written notification letter on school letterhead about sexual health education, which included opt-out language and the lessons are listed

PHYSICAL EDUCATION

- My high school offered daily physical education to all grade levels
- Fitness testing results for all students in grades 3-12 at my school were submitted into IMPACT CIM or ASPEN

NUTRITION EDUCATION

- My school integrated nutrition education into at least two courses required for graduation

KENNEDY HS has achieved 58% of Healthy CPS criteria.

- On average, schools across the district achieved 72% of Healthy CPS criteria.
- On average, Network 16 schools achieved 65% of Healthy CPS criteria.
- KENNEDY HS has achieved 1% more Healthy CPS criteria compared to SY1718.

58%



LEARNWELL

56%

SCHOOL LEADERSHIP

- ✓ My principal nominated a Wellness Champion for school year 18-19
- ✗ Our Wellness Team was active, met quarterly and reported progress to the LSC
- ✗ Parents, students and/or partners were involved with my school wellness team

PHYSICAL ACTIVITY

- N/A My school provided opportunities for daily physical activity during the school day to all students in addition to physical education
- ✓ Teachers did not withhold physical activity (recess and PE) as punishment

SCHOOL GARDENS

- N/A The school garden was supported by a school garden team
- N/A The school garden was utilized for instruction at the school at least twice a month during growing season
- N/A The school garden grew edible food

SCHOOL FOOD ENVIRONMENT

- ✗ Food is not served or sold in competition with school meals (includes fundraisers, school stores, and celebrations)
- ✗ My school implemented Breakfast After the Bell
- ✓ My school focused on celebrating with fun rather than food during the school day; any food celebrations are catered using the CPS Catering Menu
- ✓ Teachers do not use food as a reward

SAFE AND SUPPORTIVE ENVIRONMENTS

- ✓ My school had staff attend training on supporting LGBTQ students



HEALTH SERVICES

83%

EXAMS

- ✓ My school participated in the CPS Dental Exam Program
- ✓ My school participated in the CPS Vision Exam Program

SCREENINGS

- ✓ 95% of students in required grades received a hearing screening (PK, K, 1,2,3, IEP)
- ✓ 95% of students in required grades (PK,K,2,8,IEP) received a vision screening

MEDICAL COMPLIANCE

- ✗ My school achieved 90% medical compliance by October 15

MEDICAID DESIGNEE

- ✓ My principal nominated a school Medicaid Designee to assist families with acquiring health insurance for school year 18-19

NEXT STEPS

1. View your electronic report on the School Progress Report "Downloads" page
2. Visit cps.edu/HealthyCPS to get started
3. Encourage schools to update Wellness Champion and Medicaid Designee information [here](#)
4. Review requirements and guidance on specific criteria with the [Healthy CPS Checklist](#)
5. Incorporate health and wellness goals into schools' [CIWP](#)
6. Refer families to 773-553-KIDS for help with public benefit enrollment